



Hardware/Software Requirements For Self-Hosting - Single Server

In this configuration, both the web server and database server will reside on the same physical server. This configuration will be useful for a small user base of fewer than 20 active users. Since the database and web services are on the same physical server, there will be a certain performance overhead which would affect the response time as the number of users increase.

1 Server Hardware Requirements

Server	Dual Intel Xeon 2.8 GHz or higher with 6 GB RAM. Server to be used only for EbixASP web and database server. Exceptions given for use as File Server, Print Server, DHCP Server, and EbixONE server with written permission from Ebix.
SMTP Server	A separate SMTP server is required for sending out emails that are generated in the application. Microsoft Exchange Server Recommended.
Fax Server (optional)	Separate PC or Server with modems for use with RelayFax software.

2 Server Software Requirements

Microsoft Software and licenses required. Since Microsoft licensing changes often it is best to verify with your vendor proper licensing for your environment.

Qty	Description
1	MS Windows Server 2008 R2 Enterprise (32/64 bit)
1	SQL Server 2008 R2 Standard or Enterprise Edition
-	Windows 2008 Client Access Licenses (number large enough to handle users and growth)
-	SQL Server 2008 Client Access Licenses (number large enough to handle users and growth)

Third-party software/tools required:

Software	Vendor	Description/Function
Active PDF Toolkit Professional Version *	www.activepdf.com	ActivePDF Toolkit Professional 2011 single Production Server License, Includes Annual Subscription
ASPEmail	www.aspemail.com	Immediate Emails – Single Server License-Registration Key may be installed on one server only – download the 32-bit Purchase version. Free or demo versions not supported.
ASPCrypt (no need to buy)	Available from Ebix, no need to purchase.	Password Encryption. Will be setup with ASP server setup.
MS Excel 2010	www.microsoft.com	Required for creating Excel Reports.
Alt-N's RelayFax Pro	http://www.altn.com	(Optional) Required for faxing. Separate Fax Server hardware required.
Zip Utility	www.winzip.com	Needed to zip database for support troubleshooting

***As technology continues to advance, changes to these requirements will be made. Confirm with your IT staff or consultant before purchasing equipment or software based on the requirements listed above. Ebix works to test the latest version of the software but recommends you contact Ebix before making final server or software purchase.**

No other software should be loaded on the server without prior written approval from Ebix IT / Development staff.

3 PC Software Requirements

Internet Browser

Microsoft Internet Explorer 8

Adobe Acrobat Reader – 8 or 9

You may download from the following site <http://www.adobe.com>. Be sure to review their system requirements based on the version you want to download.

Operating System

Microsoft Windows XP with Service Pack 2 or 3, Microsoft Vista, Microsoft 7.

Optional Software

Microsoft Excel 2010 – Required for exporting reports to Excel

Microsoft Outlook 2010 for email Integration with EbixASP

Scanning software of your choice - EbixASP allows attachments but client must provide JPG, PDF, or other file.

4 PC Hardware Requirements

Computer Processor

Intel Pentium 400 MHz or higher

Memory – Recommended

1 GB minimum; 2 GB recommended

Hard Drive Space

200 MB free space (minimum required for full installation of Microsoft Internet Explorer)

Monitors & Display

Recommend wide screen monitors; 17” monitor with VGA 256 color display card minimum.

Screen Resolution: The site was designed for 1024 x 768 screen resolution. Using a lower resolution may not display the screens correctly on your monitor.

5 Additional Requirements

Email	You must have a working email address so that we can contact you when necessary regarding updates or other announcements.
VPN / Remote Access	VPN access to web and database servers for initial setup and ongoing maintenance. If VPN access is not available some other similarly and easily accessible secure remote access can be used. EbixSupport may occasionally need administrative access to the servers and it is the client’s responsibility to provide IP address, logon, and password information. Ebix recommends setting up a separate Administrator account (software installation and configuration) and User account (EbixSupport troubleshooting) for Ebix access.
Download	If downloading with a carrier, an external IP address or URL must be provided at Self-Hosted Site.
Terminal Server	Agencies planning on using Citrix or Terminal Server for client connections to the EbixASP server are responsible for setting up the connectivity and for handling any issues between the Citrix/Terminal Server and EbixASP server. Programs that must be installed on the PC, such as the Ebix Desktop Print Utility and Document Merge, must be installed on the terminal server as Administrator before any terminal clients can use.
Client PCs	Hardware and software installation, setup, and ongoing support on the client PCs are the end-users responsibility.

6 PC Settings

Below are the minimum settings required for PCs accessing EbixASP. Please refer to the EbixASP Online help topic *Configure PCs for use with EbixASP* and *Internet Settings for EbixASP* for the most current recommendations.

Verify Internet Options Settings:

IE 8.0

In Internet Explorer, access the Tools menu, and select Internet Options.

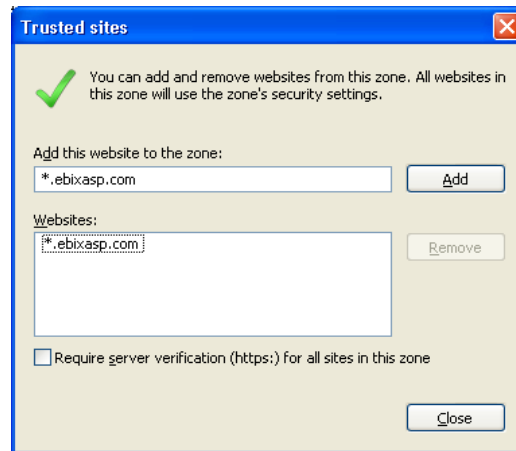
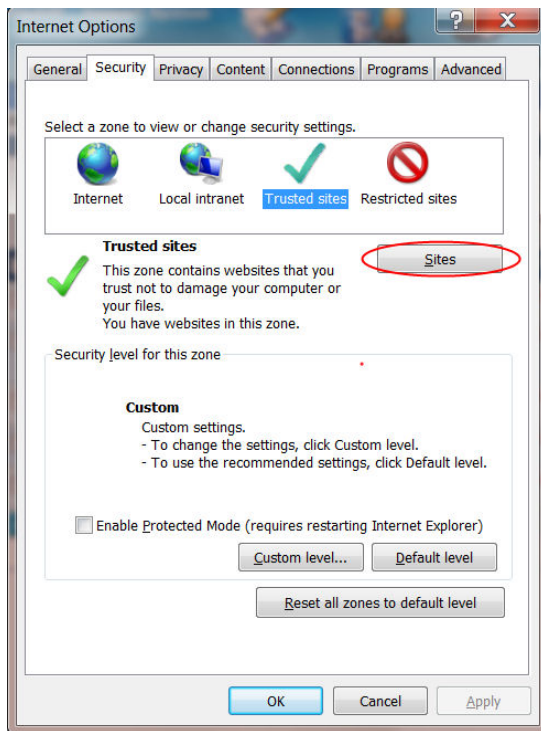
On the General tab under Browsing history, click on **Settings** and make sure that **"Every time I visit the web page"** is selected

Next to Disk Space to use, enter 128

Click **OK** on the Settings panel

Add EbixASP as Trusted Site:

1. Open **Internet Options** if not already done above.
2. Click on the **Security Tab**
3. Click on the **Trusted Sites** icon
4. Click on the **Sites...** button. The Trusted Site window will appear.
5. Enter ***.ebixasp.com** and click **Add**. (Also **Add** your server IP or web URL of EbixASP web server.)



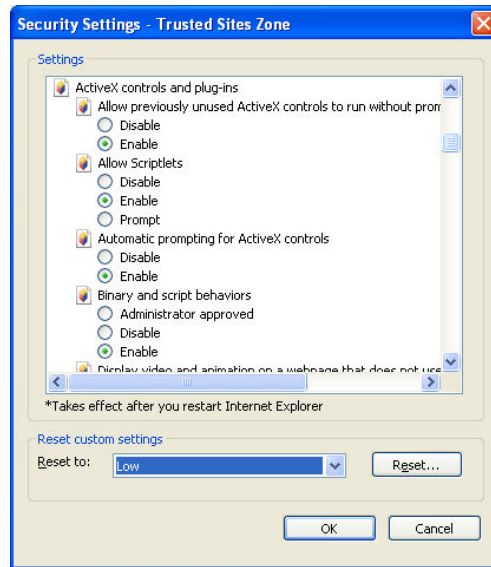
Note:

Make sure the 'Require server verification' check box is unmarked, otherwise you will be unable to add the address as a Trusted Site.

6. Click **Close** to return to the *Internet Options* > Security tab.

6 PC Settings (Cont'd)

7. Click the **Custom** Level... button to open the *Security Settings - Trusted Sites Zone*.



8. Change *Reset to:* drop down to **Low** then click the **Reset...** button. Choose **Yes** if warning message to make changes appears.
9. Under Settings, scroll down to the section *ActiveX controls and plug-ins* and make sure **all** radio buttons are marked **Enabled**.
10. Scroll down to the section *Miscellaneous* and make sure *Access data sources across domains* is **Enabled**.
11. Scroll down to the section *Scripting* and make sure all radio buttons are marked **Enabled**.
12. Click **OK** to close the *Security Settings - Trusted Sites Zone* window. Choose **Yes** if warning message to save appears.
13. Click **OK** to close the *Internet Options* window.

NOTE: The above requirements are subject to change without notice. Please check the EbixASP On-line help for the most current specifications.